



# 1D SCANNER™

## Fast and Accurate 1D Scanning

Accurate 1D scanning with water level detection that removes setup subjectivity.

### The 1D Scanner Advantage

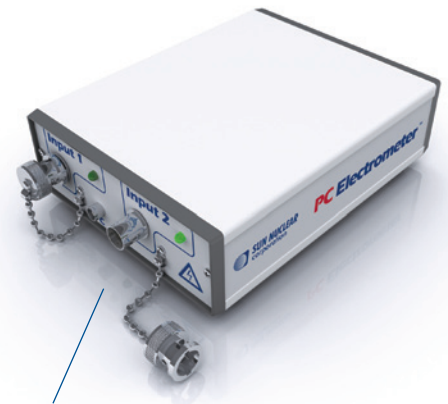
- ▶ Automatic water level detection
  - › For detector positioning
- ▶ Pendant or software control
- ▶ 30cm scanning depth

### Hardware

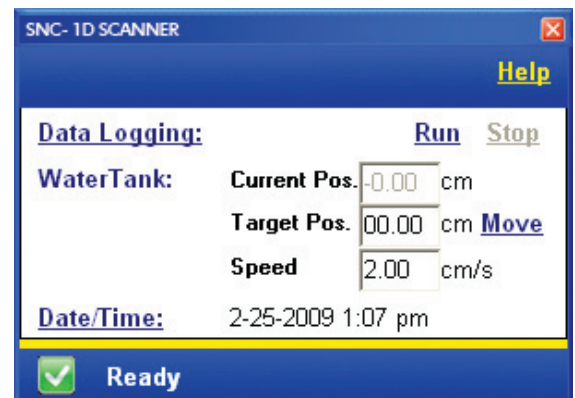
- ▶ 35 x 39cm internal dimensions
  - › Supports all common electron cones
- ▶ Integrated multi-function pendant and scanning arm
- ▶ Easy to setup and use
  - › Horizontal ruler for off-axis detector positioning
  - › Single power/data cable connection
- ▶ Detector holders included:
  - › Farmer-type, universal, and reference
- ▶ Leveling platform available

### Software

- ▶ Included software for remote positioning
- ▶ PDD curve analysis (with PC Electrometer™) using Excel

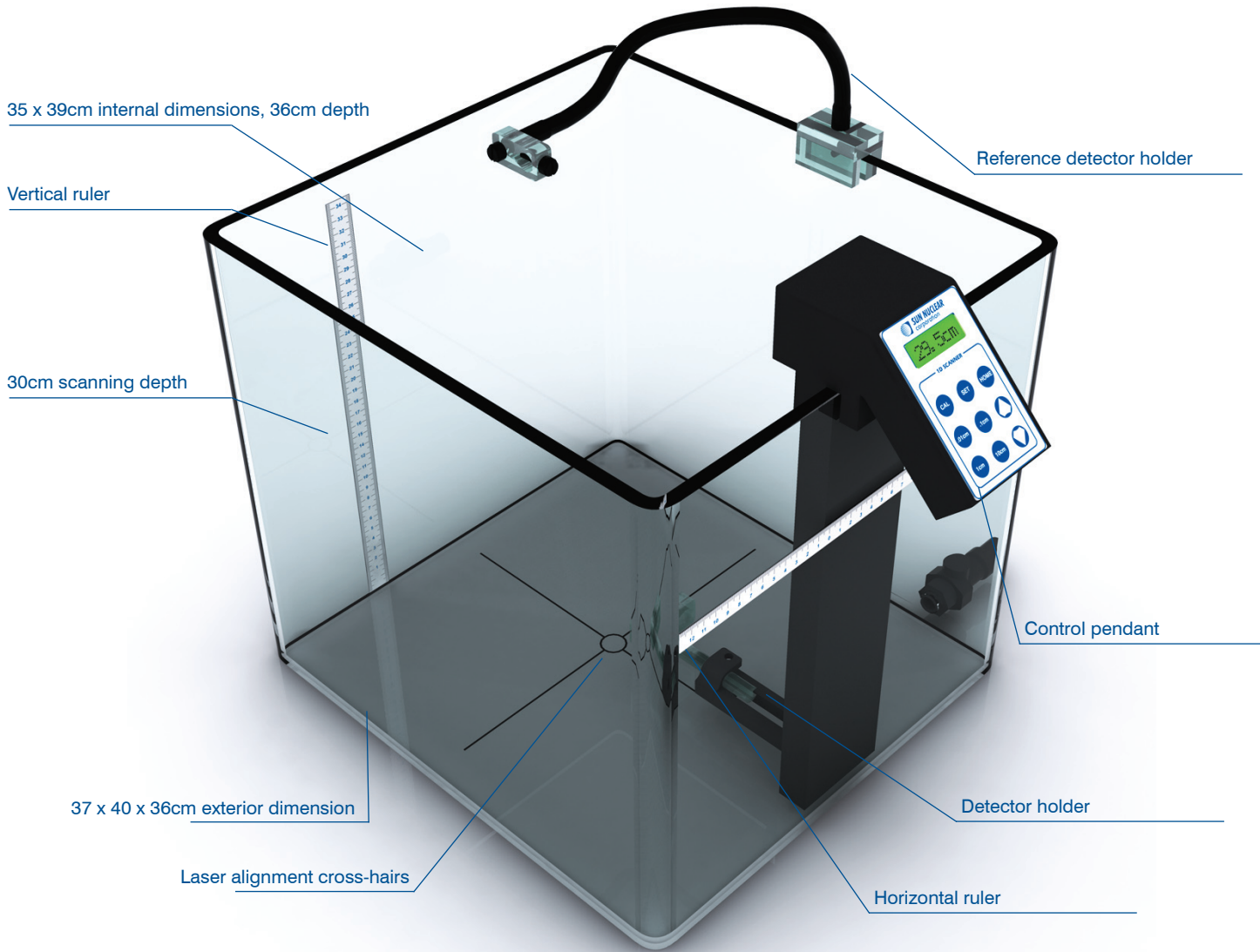


The 1D SCANNER makes the perfect measurement solution when paired with the reference-class PC Electrometer

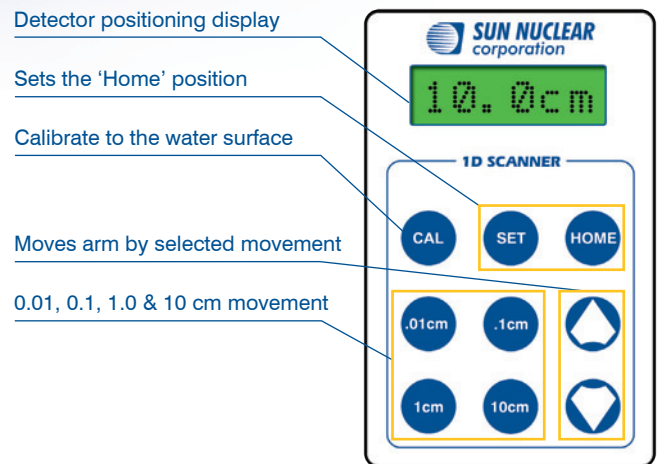


Included 1D SCANNER software integrates with the PC Electrometer

# Features and Specifications



Inner dimensions (cm):	35.0 x 39.0 x 36.2
Exterior dimensions (cm):	37.6 x 40.6 x 36.8
Interior volume:	50 liters at 35cm
Weight empty with arm (kg):	10.4
Arm positioning increments (cm):	0.01, 0.1, 1.0 & 10.0
Arm positioning accuracy (cm):	± 0.01
Scan depth maximum (cm):	30.0
Operating system:	Windows 2000, XP or Vista (32-bit)
Number of connection cables:	Single power/data cable



All data used is best available at time of publication. Data is subject to change without notice. All Content ©2010, Sun Nuclear Corporation. All Rights Reserved.